

***SEMCOG
SAFE STREETS NOW***

TAP GRANT



SEMCOG SAFE STREETS NOW GRANT

- Region Total: \$7 Million in Transportation Alternatives Program (TAP) funds
- “Shovel-ready” projects to enhance pedestrian and bicycle safety
- FY 2027

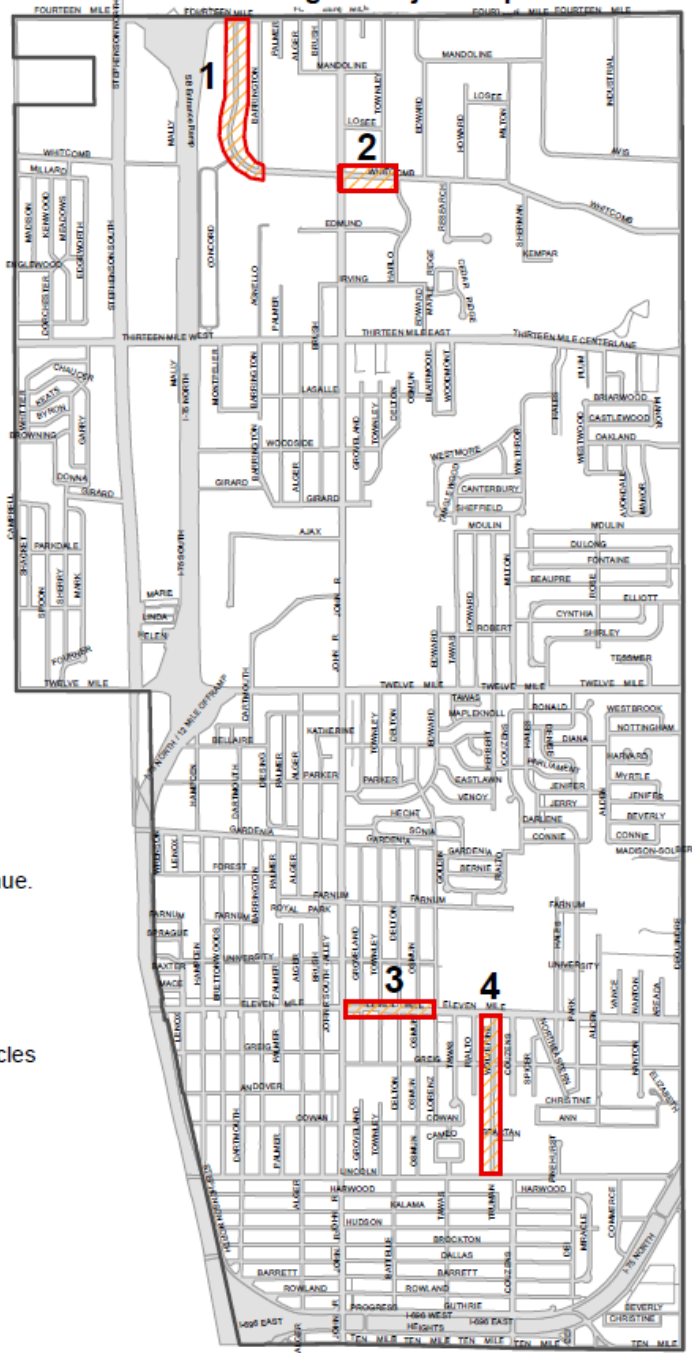
MADISON HEIGHTS PROJECT DETAILS

- Four (4) Rectangular Rapid Flashing Beacon (RRFB) systems and ramps/crosswalks
- Two (2) mid-block mini traffic circles.
- Total Project Cost: **\$225,753**
- Madison Heights awarded **\$180,602** in grant funding.
- 20% Local Match: **\$45,150**





SEMOG Safe Streets Now Grant Madison Heights Project map



PROJECTS

- 1 Concord Dr.
RRFBs (x 2)
- 2 Whitcomb Avenue.
RRFB (x1)
- 3 11 Mile / DDA
RRFB (x1)
- 4 Wolverine St.
Mini Traffic Circles
(x2)

N
1 inch = 2,172 feet

Date: 11/04/2025

PROJECT SELECTION

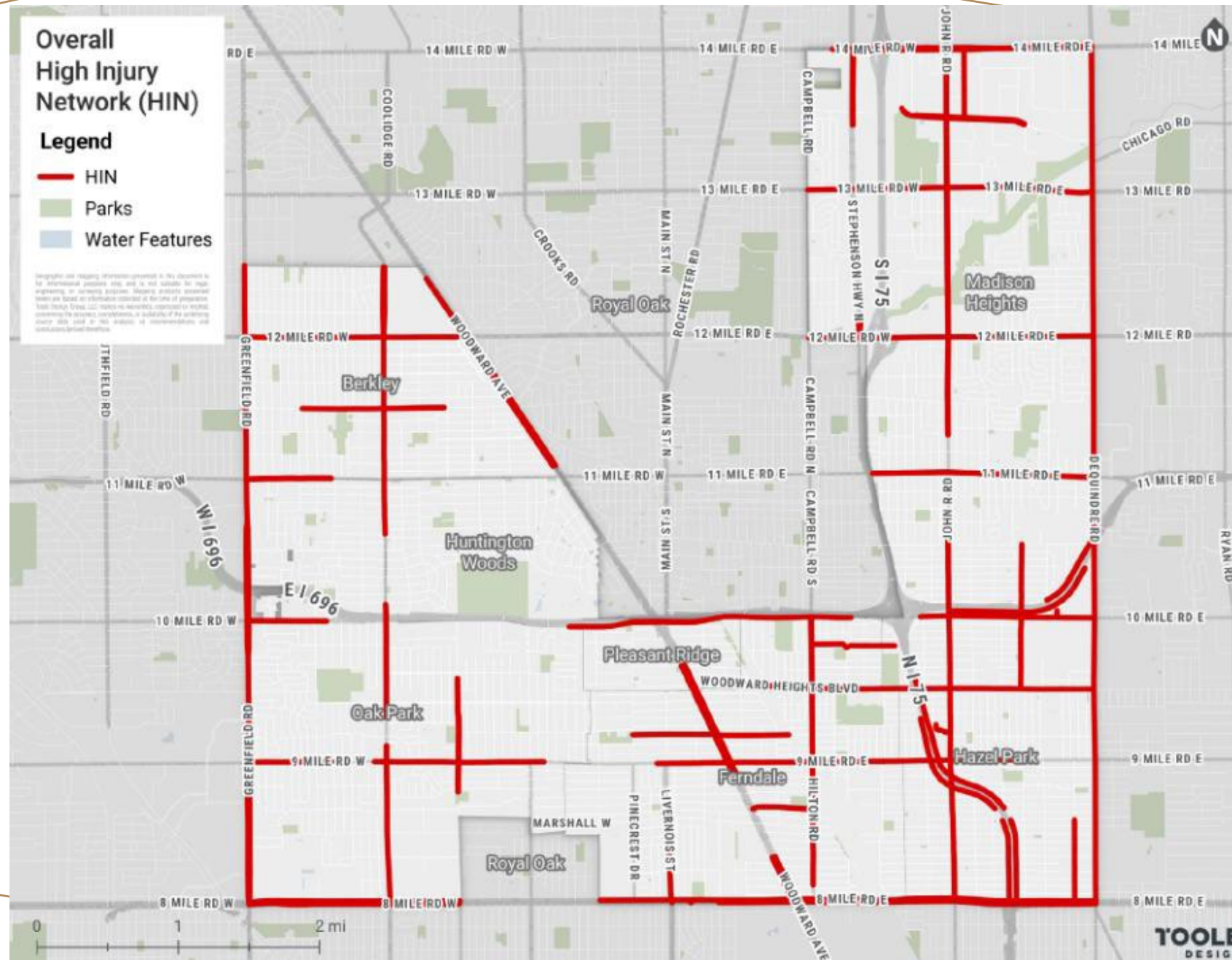
- SE Oakland County Safety Action Plan (2025)
- Vision Zero Resolution (2024)
- Madison Heights Master Plan
- 11 Mile/DDA Streetscape Plan (2024)
- People-Powered Transportation Program

Overall High Injury Network (HIN)

Legend

- HIN
- Parks
- Water Features

Geographic information shown on this map is for informational purposes only and is not suitable for engineering or planning purposes. Mapping products generated herein are based on information collected at the time of preparation. Toole Design Group, LLC makes no warranty, expressed or implied, concerning the accuracy, completeness, or suitability of the information shown on this map for any purpose, or for any use, or for any consequences arising from its use.



RECTANGULAR RAPID FLASHING BEACON (RRFB)

- Placed mid-block or at unsignalized crosswalks
- Pedestrian-activated flashing LEDs and pedestrian crossing signs
- Solar-powered
- Boost driver yielding rates to as high as 98% and reduce pedestrian crashes by up to 47% (FHWA).
- Four (4) RRFBs: Concord Drive (x2), E. Whitcomb Avenue, and E 11 Mile Road.





Existing



Proposed (for reference only)







Existing

Proposed (for reference only)

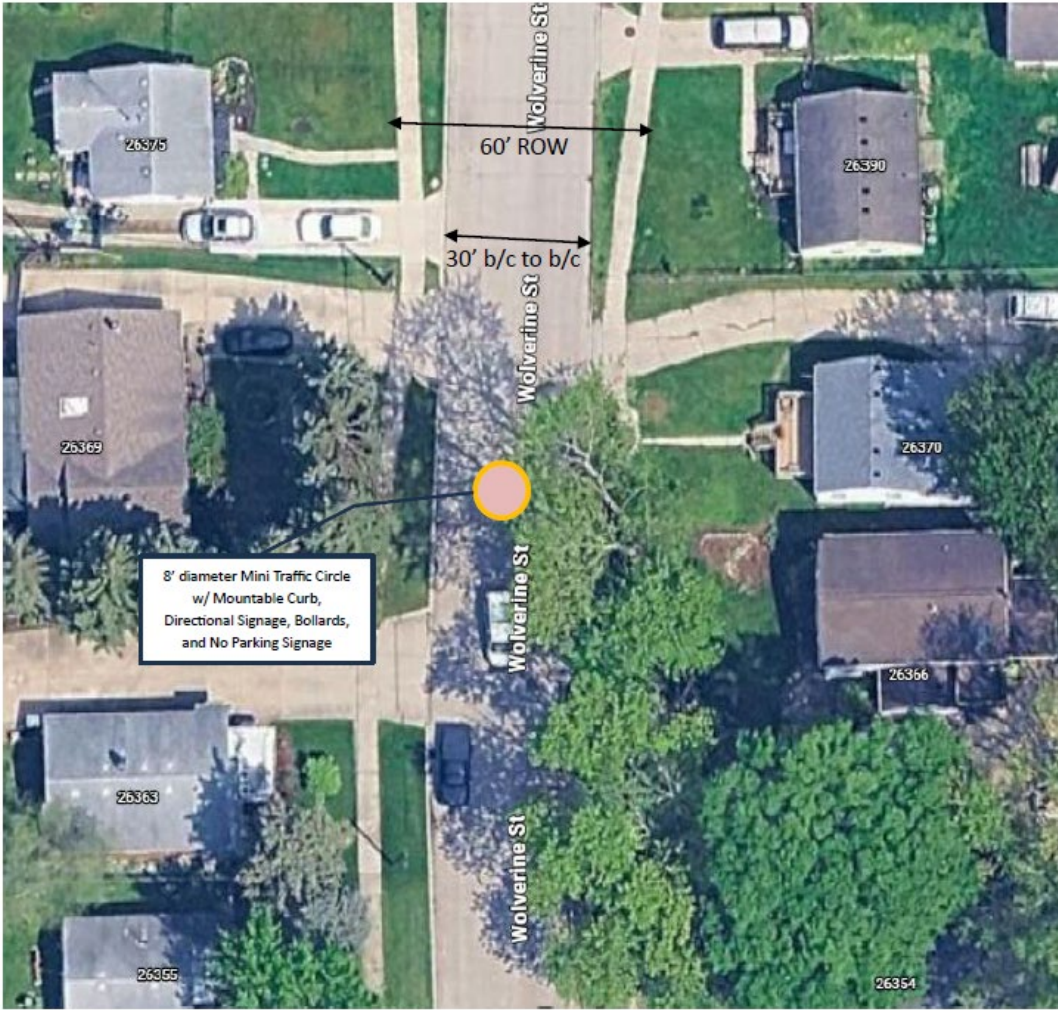


MINI TRAFFIC CIRCLES

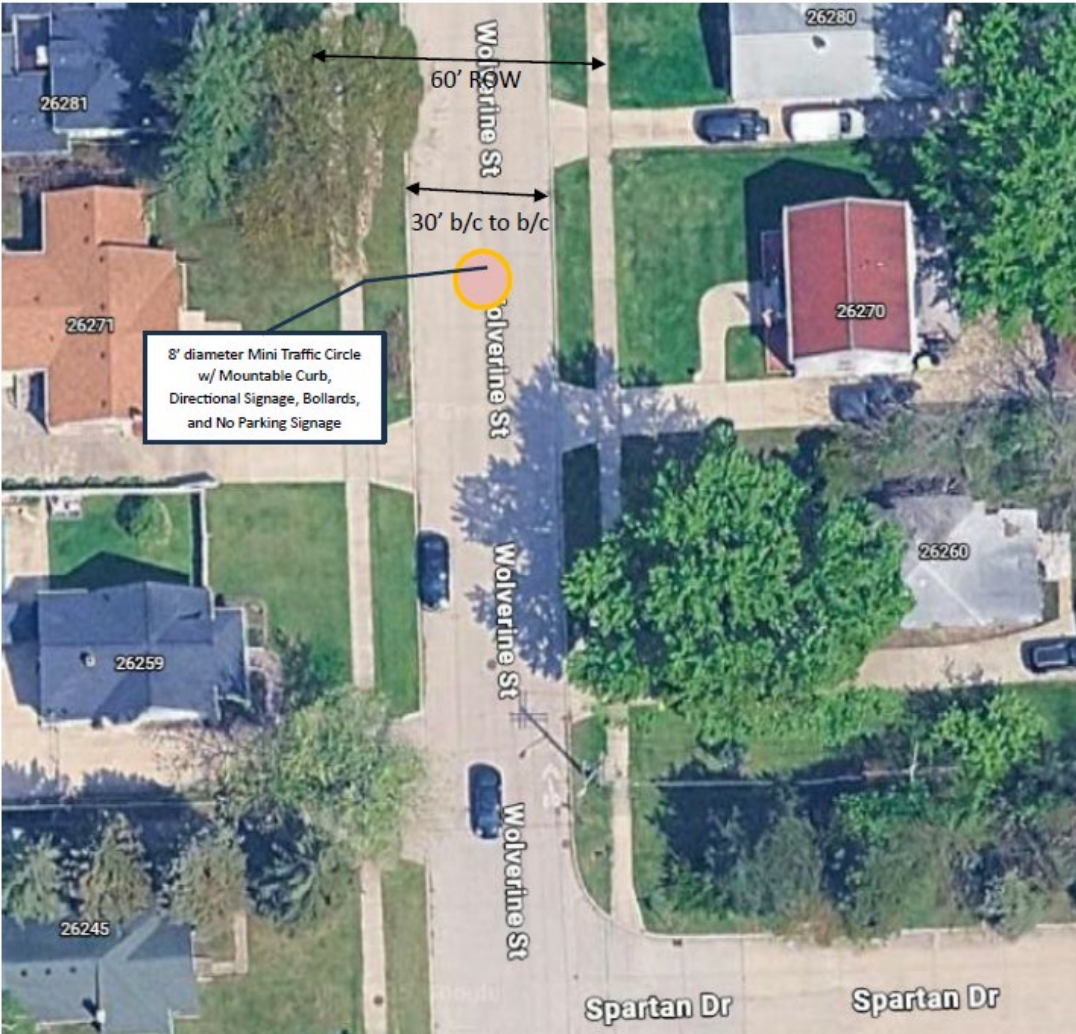
- Placed mid-block within neighborhoods streets
- Narrows travel lane and slows down vehicle speeds
- Mountable curbs and bollards; reflective signs
- Two (2) circles: Wolverine Street between 11 Mile and Lincoln [Bike Route w/sharrows]



Mini Traffic Circle 4a (north)



Mini Traffic Circle 4b (south)



PROJECT DETAILS

Anticipated Construction: Spring/Summer 2027

Anticipated Maintenance needs/cost (DPS):

- Sectional pavement repair
- Replacement of plastic bollards, signage, reflective panels
- Repair of RRFB pushbuttons and flashing lights
- Re-painting of pavement markings

\$45,150 Local Match [Act 51 Major Roads Funding]

THANK YOU

Matt Lonnerstater, AICP

City Planner

MattLonnerstater@madison-heights.org

