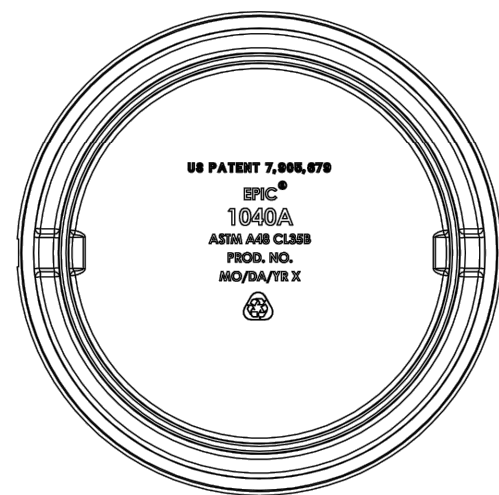
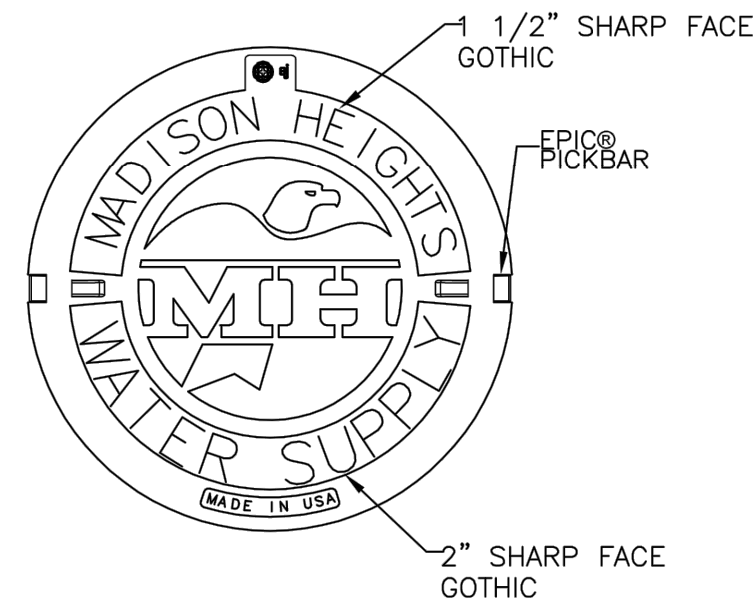
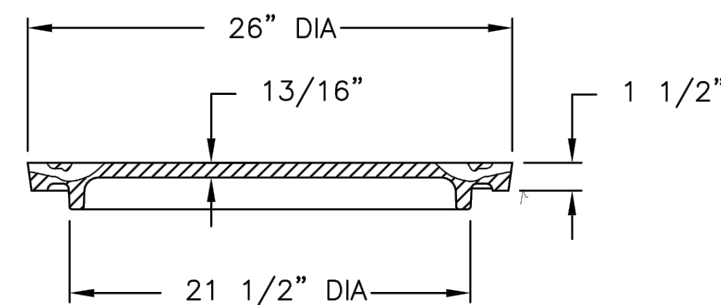


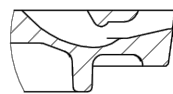
1040A Cover



BOTTOM VIEW
OF COVER



COVER SECTION



DETAIL B
SCALE 1 : 4

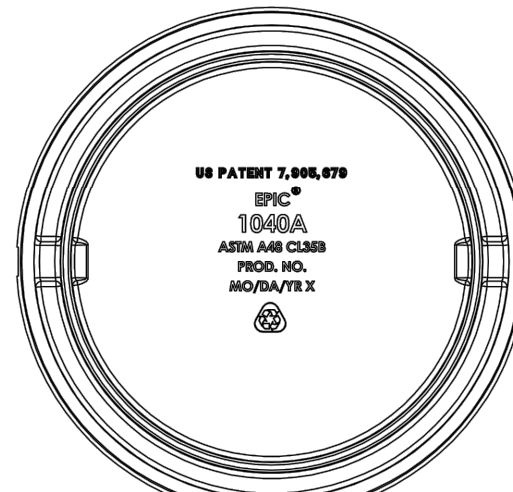
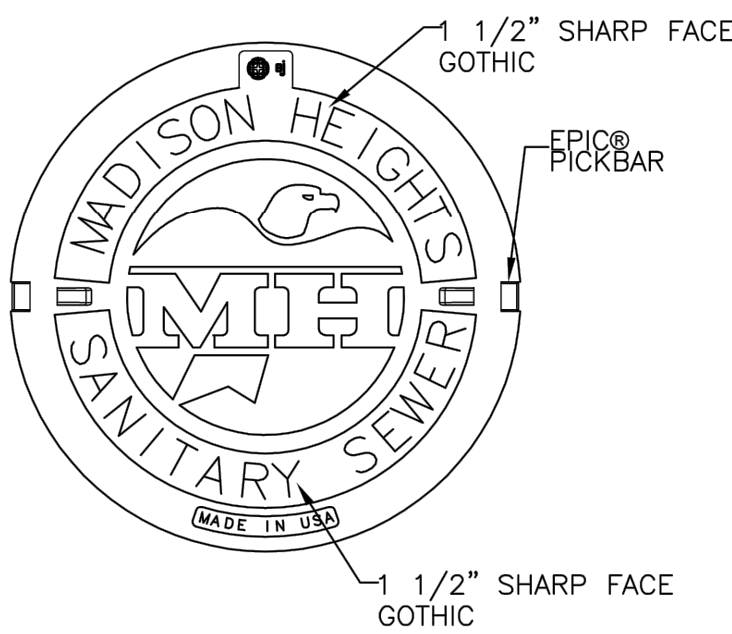


Product Number
00103941
Design Features
-Materials
Gray Iron (CL35B)
-Design Load
Heavy Duty
-Open Area
n/a
-Coating
Dipped
-√ Designates Machined Surface

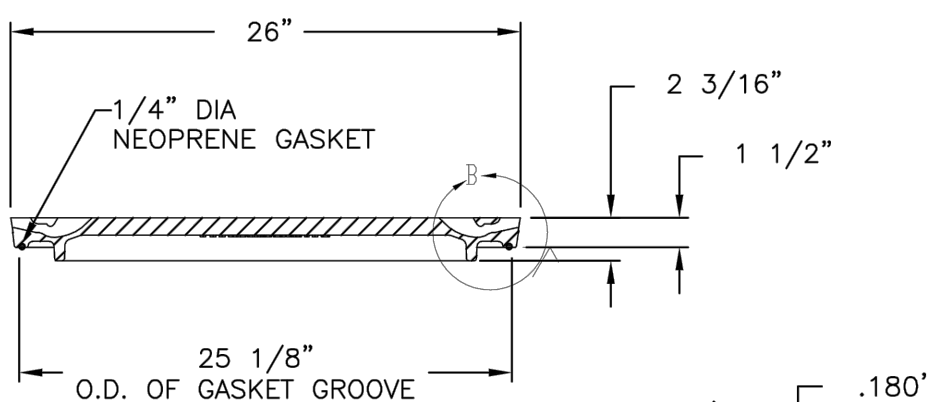
Certification
- ASTM A48
-
-Country of Origin: USA

Drawing Revision
7/29/2015 Designer: MAH
8/12/2015 Revised By: MAH
Disclaimer
Weights (lbs./kg) dimensions (inches/mm)
and drawings provided for your guidance. We
reserve the right to modify specifications without
prior notice.
CONFIDENTIAL: This drawing is the property
of EJ GROUP, Inc., and embodies confidential information,
registered marks, patents, trade secret information,
and/or know how that is the property of EJ GROUP, Inc.
Copyright © 2012 EJ GROUP, Inc.
All rights reserved.
Contact
800 626 4653
ejco.com

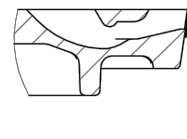
1040AGS Cover



BOTTOM VIEW
OF COVER



COVER SECTION



DETAIL B
SCALE 1 : 4

GROOVE DETAIL

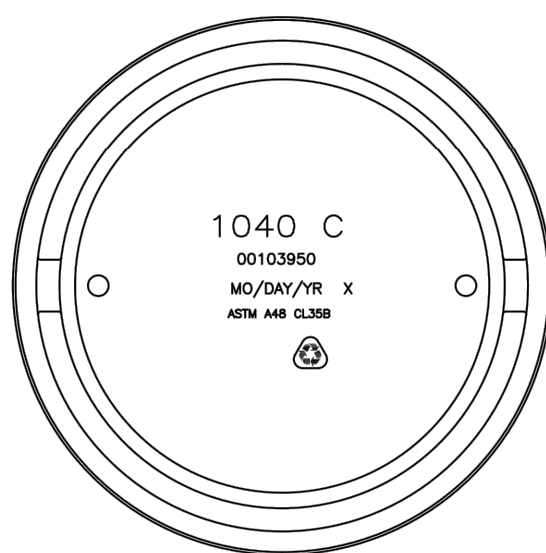
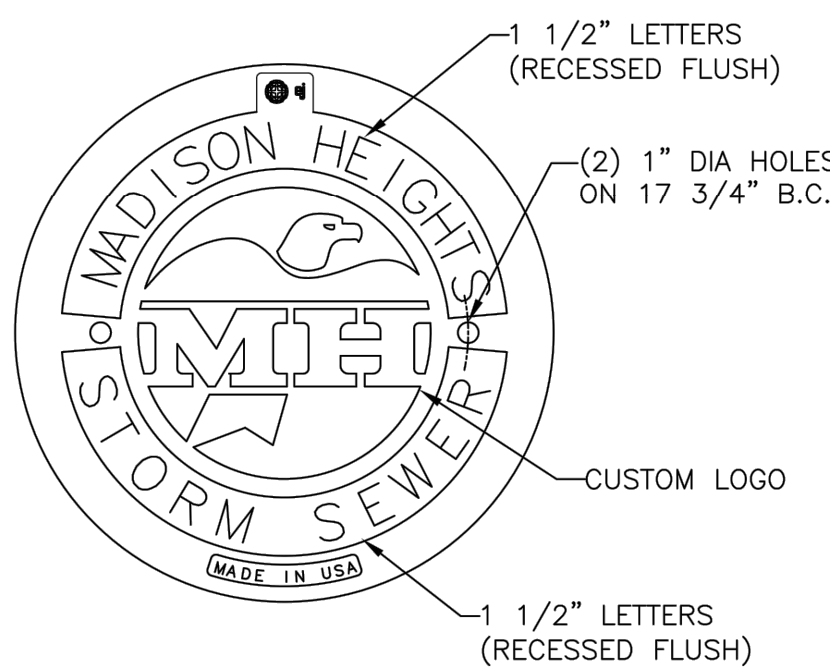


Product Number
00103949
Design Features
-Materials
Gray Iron (CL35B)
-Design Load
Heavy Duty
-Open Area
n/a
-Coating
Dipped
-√ Designates Machined Surface

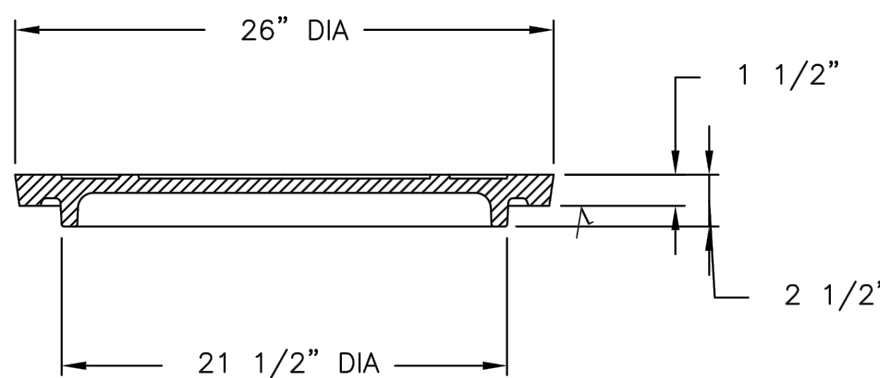
Certification
- ASTM A48
-
-Country of Origin: USA

Drawing Revision
7/29/2015 Designer: MAH
8/12/2015 Revised By: MAH
Disclaimer
Weights (lbs./kg) dimensions (inches/mm)
and drawings provided for your guidance. We
reserve the right to modify specifications without
prior notice.
CONFIDENTIAL: This drawing is the property
of EJ GROUP, Inc., and embodies confidential information,
registered marks, patents, trade secret information,
and/or know how that is the property of EJ GROUP, Inc.
Copyright © 2012 EJ GROUP, Inc.
All rights reserved.
Contact
800 626 4653
ejco.com

1040C Cover



BOTTOM VIEW
OF COVER



COVER SECTION

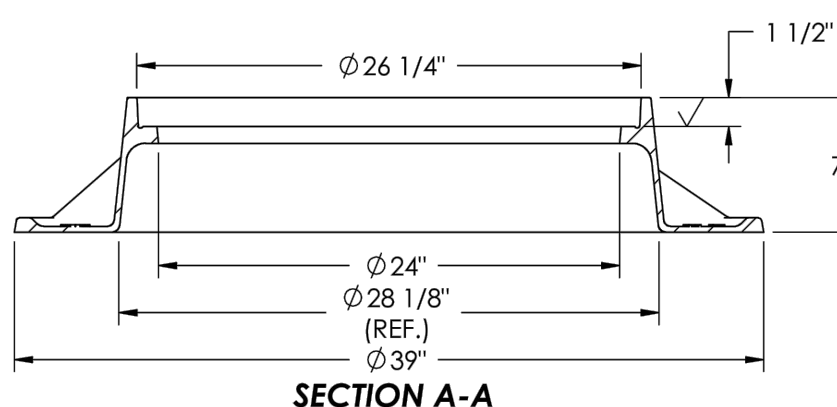
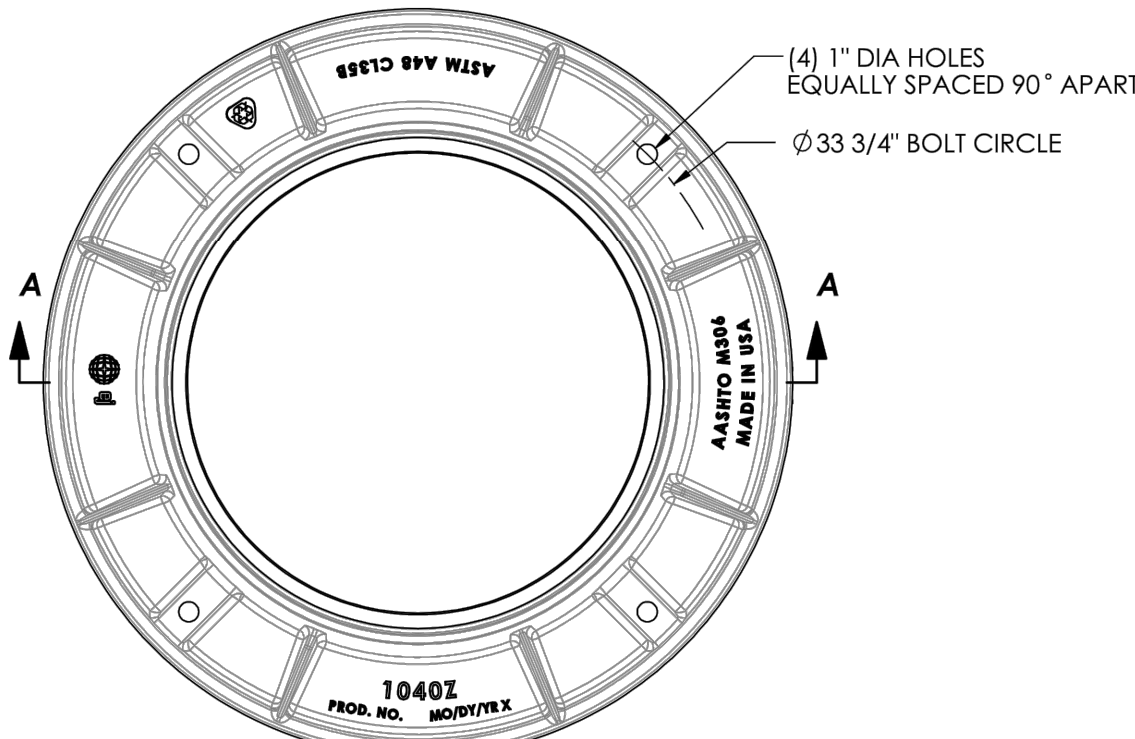


Product Number
00103950
Design Features
-Materials
Gray Iron (CL35B)
-Design Load
Heavy Duty
-Open Area
n/a
-Coating
Dipped
-√ Designates Machined Surface

Certification
- ASTM A48
-
-Country of Origin: USA

Drawing Revision
03/10/2005 Designer: SMH
11/01/2013 Revised By: DVD
Disclaimer
Weights (lbs./kg) dimensions (inches/mm)
and drawings provided for your guidance. We
reserve the right to modify specifications without
prior notice.
CONFIDENTIAL: This drawing is the property
of EJ GROUP, Inc., and embodies confidential information,
registered marks, patents, trade secret information,
and/or know how that is the property of EJ GROUP, Inc.
Copyright © 2012 EJ GROUP, Inc.
All rights reserved.
Contact
800 626 4653
ejco.com

1040 Frame



SECTION A-A



Product Number
00104010
Design Features
-Materials
Gray Iron (CL35)
-Design Load
Heavy Duty
-Open Area
n/a
-Coating
Dipped
-√ Designates Machined Surface

Certification
-ASTM A48
-AASHTO M306
-Country of Origin: USA

Drawing Revision
6/6/2008 Designer: JIJ
3/13/2012 Revised By: SDC
Disclaimer
Weights (lbs./kg), dimensions (inches/mm)
and drawings provided for your guidance. We
reserve the right to modify specifications without
prior notice.
CONFIDENTIAL: This drawing is the property
of EJ Group, Inc. and embodies confidential information,
registered marks, patents, trade secret information,
and/or know how that is the property of EJ Group, Inc.
Copyright © 2011 EJ Group, Inc.
All rights reserved.
Contact
800 626 4653
ejco.com

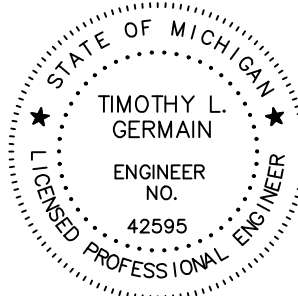


ENGINEERS

CIVIL ENGINEERS
LAND SURVEYORS
LAND PLANNERS

NOWAK & FRAUS ENGINEERS
46777 WOODWARD AVE.
PONTIAC, MI 48342-5032
TEL. (248) 332-7931
FAX. (248) 332-8257
WWW.NOWAKFRAUS.COM

SEAL



PROJECT

City of Madison Heights

CLIENT

City of Madison Heights
300 W. 13 Mile Road
Madison Heights,
MI 48071

PROJECT LOCATION

City of Madison Heights,
Oakland County, MI

SHEET

Water Main Standard
Details - Standard
Manhole Covers



Know what's below
Call before you dig.

DATE ISSUED/REVISED

DATE	ISSUED/REVISED

DRAWN BY:

J. Lawrey

DESIGNED BY:

B. Brickel

APPROVED BY:

T. Germain

DATE:

December 9, 2019

SCALE: N.T.S.

NFE JOB NO.

L418

SHEET NO.

D4