

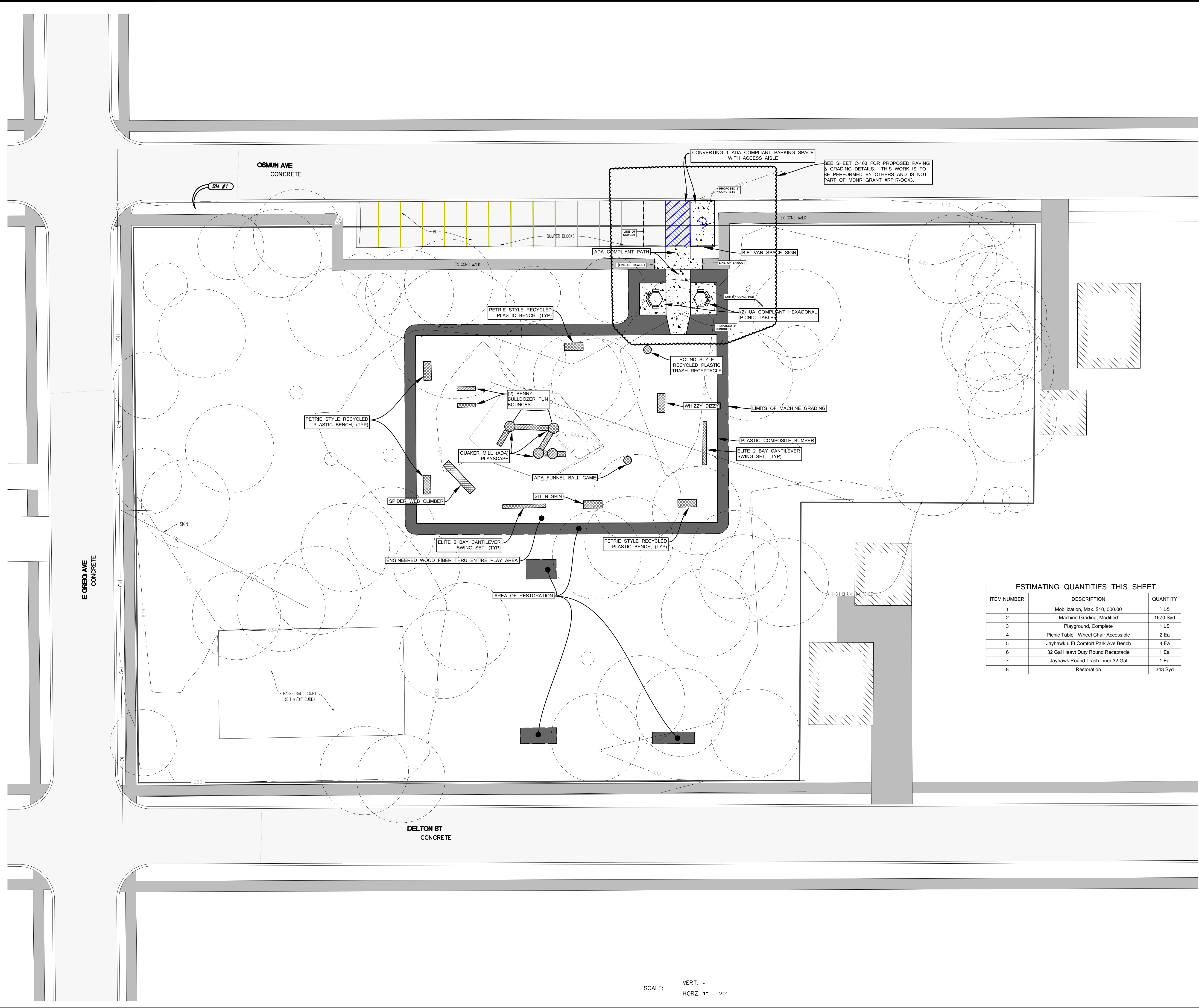
Sheet - C-102

L:\180000\18336_MH_DNR_Grant_App-Wildwood_PVA\DWG\18336_C-102.dwg

JMK MCCBAIN

SHE DATE: 12/20/2018 8:08:08 AM

PLOT DATE: 12/20/2018 8:10:08 AM



LEGEND

- EXISTING
- WATER MAIN
 - SANITARY SEWER
 - STORM SEWER
 - GAS MAIN
 - UNDERGROUND ELECTRIC
 - UNDERGROUND TELEPHONE/CONDUIT
 - UNDERGROUND FIBER OPTIC
 - LIGHT POLE
 - GUY ANCHOR
 - GUY POLE
 - POWER POLE
 - TELEPHONE MANHOLE
 - UG TELEPHONE BOX
 - UG CABLE TV BOX
 - UG ELECTRIC BOX
 - GAS METER
 - ELECTRIC METER
 - ELECTRIC MANHOLE
 - ELECTRIC OUTLET
 - MAILBOX
 - SIGN
 - POST
 - CONCRETE FILLED POST
 - GUARD POST
 - WATER SERVICE - SHUT OFF
 - GATE VALVE IN WELL
 - SPRINKLER VALVE
 - SPRINKLER HEAD
 - FIRE HYDRANT
 - FIRE HYDRANT VALVE
 - STORM MANHOLE
 - CATCH BASIN
 - SANITARY MANHOLE
 - CLEAN OUT
 - FOUND IRON/RE-ROD/PIPE
 - FOUND MONUMENT
 - ELEVATION TAKEN HERE
 - ELECTRIC MARKER
 - GAS MARKER
 - MONITORING WELL
 - DECIDUOUS TREE WDRILINE
 - CONIFEROUS TREE WDRILINE
 - BUSH

Know what's below
 Call before you dig
811 BEFORE YOU DIG CALL
 MISS DIG System, Inc.
 1-800-482-7171 www.missdig.net

Johnson & Anderson
 4494 Elizabeth Lake Road 950 W. Norton Avenue, Suite 207 2291 Water Street, Suite 6 2387 S. Linden Road, Suite 6-42
 Warren, Michigan 48090 Port Huron, Michigan 48060 Flint, Michigan 48532
 Tel (810) 887-7820 Tel (231) 780-3100 Tel (810) 820-9199
 Tel (248) 851-7900 Tel (231) 780-3115 Tel (810) 877-7895
 Tel (248) 851-2660 Tel (231) 780-3115 Tel (248) 851-2660

WARNING
 UTILITY LOCATIONS ARE SHOWN FOR INFORMATION ONLY. CONTRACTOR SHALL VERIFY ALL UTILITIES BEFORE BEGINNING WORK. CONTRACTOR SHALL BE RESPONSIBLE FOR PROTECTING ALL UTILITIES THAT MIGHT BE ENCOUNTERED. THE CONTRACTOR SHALL BE RESPONSIBLE FOR OBTAINING ALL NECESSARY PERMITS AND SHALL BE RESPONSIBLE FOR THE COST OF ALL UTILITIES THAT MIGHT BE ENCOUNTERED.

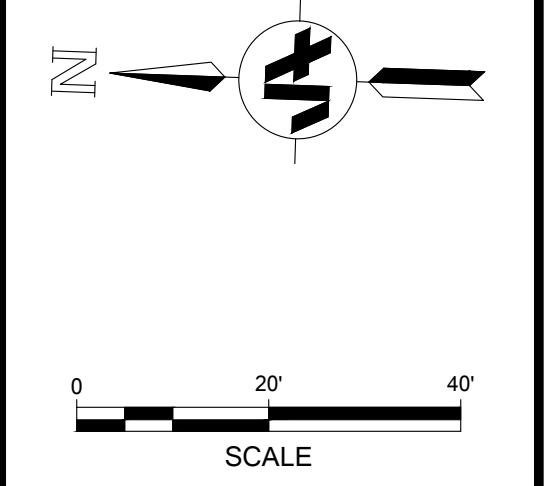


Madison Heights
 300 W. 13 Mile Road
 Madison Heights, MI 48071

SITE PLAN
 Wildwood Park

ESTIMATING QUANTITIES THIS SHEET

ITEM NUMBER	DESCRIPTION	QUANTITY
1	Mobilization, Max. \$10,000.00	1 LS
2	Machine Grading, Modified	1670 Syd
3	Playground, Complete	1 LS
4	Picnic Table - Wheel Chair Accessible	2 Ea
5	Jayhawk 6 Ft Comfort Park Ave Bench	4 Ea
6	32 Gal Heavy Duty Round Receptacle	1 Ea
7	Jayhawk Round Trash Liner 32 Gal	1 Ea
8	Restoration	343 Syd



MARK	ISSUED FOR	DATE
-	-	-
-	-	-
-	-	-
-	-	-
-	-	-
-	-	-
-	-	-
-	-	-

DRAWN BY: J&A
 DESIGN BY: -
 CHECKED BY: -

J&A JOB NUMBER: 18336

SHEET NO.
C-102

SCALE: VERT. -
 HORZ. 1" = 20'