

ANNUAL SIDEWALK REPAIR PROGRAM

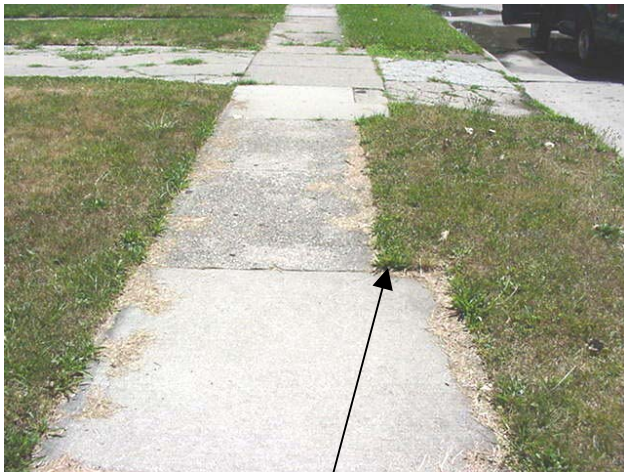
EXAMPLES OF COMMON PROBLEMS INCLUDED IN THE REPAIR CRITERIA



Trip hazard – any difference between slabs of ½” or more or surface imperfections of ½” or more.



Cracked slabs – cracks in slabs, especially those with loose pieces of concrete.



Variable width sidewalk – some areas still have 4’ wide sidewalk. For the past forty years the standard has been 5’. All walk replaced during that time has been 5’ wide creating trip hazards where the walk narrows.



Spalled or deteriorated surfaces or joints – any area where the surface has pitted, popped out or spalled or where joints between slabs have chipped or deteriorated. These surfaces are hazardous and permit further deterioration from freeze/thaw cycles.