

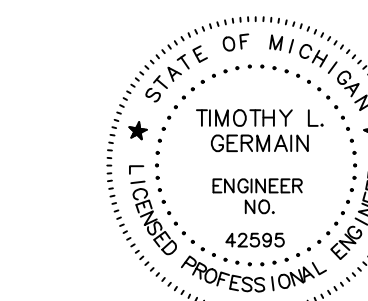


ENGINEERS

CIVIL ENGINEERS
LAND SURVEYORS
LAND PLANNERS

NOWAK & FRAUS ENGINEERS
46777 WOODWARD AVE.
PONTIAC, MI 48342-5032
TEL. (248) 332-7931
FAX. (248) 332-8257
WWW.NOWAKFRAUS.COM

SEAL



PROJECT
City of Madison Heights

CLIENT
City of Madison Heights
300 W. 13 Mile Road
Madison Heights,
MI 48071

PROJECT LOCATION
City of Madison Heights,
Oakland County, MI

SHEET
Water Main Standard
Details - Gate Valves and
Wells



Know what's below
Call before you dig.

DATE ISSUED/REVISED

DRAWN BY:
J. Lawrey

DESIGNED BY:
B. Brickel

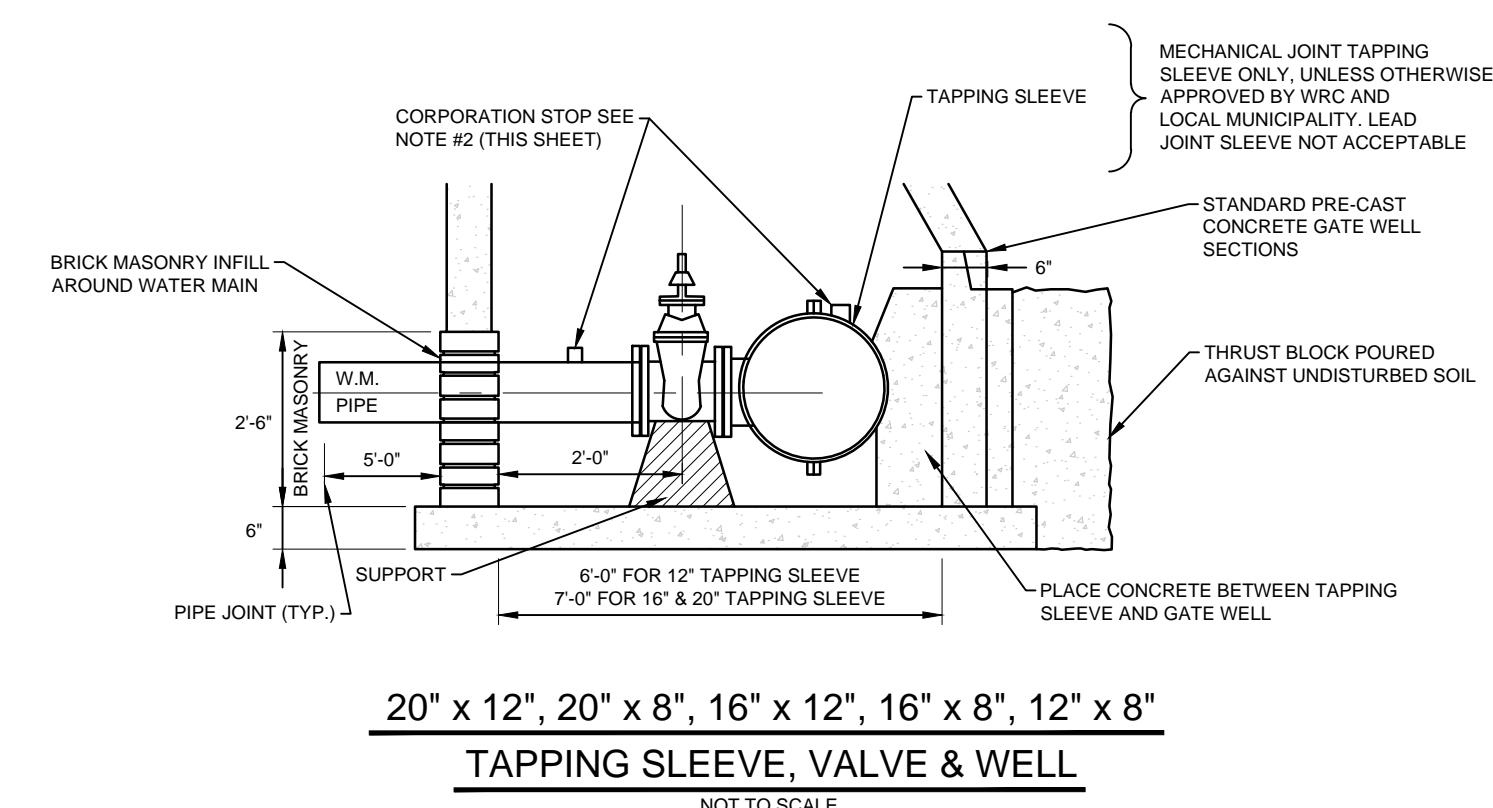
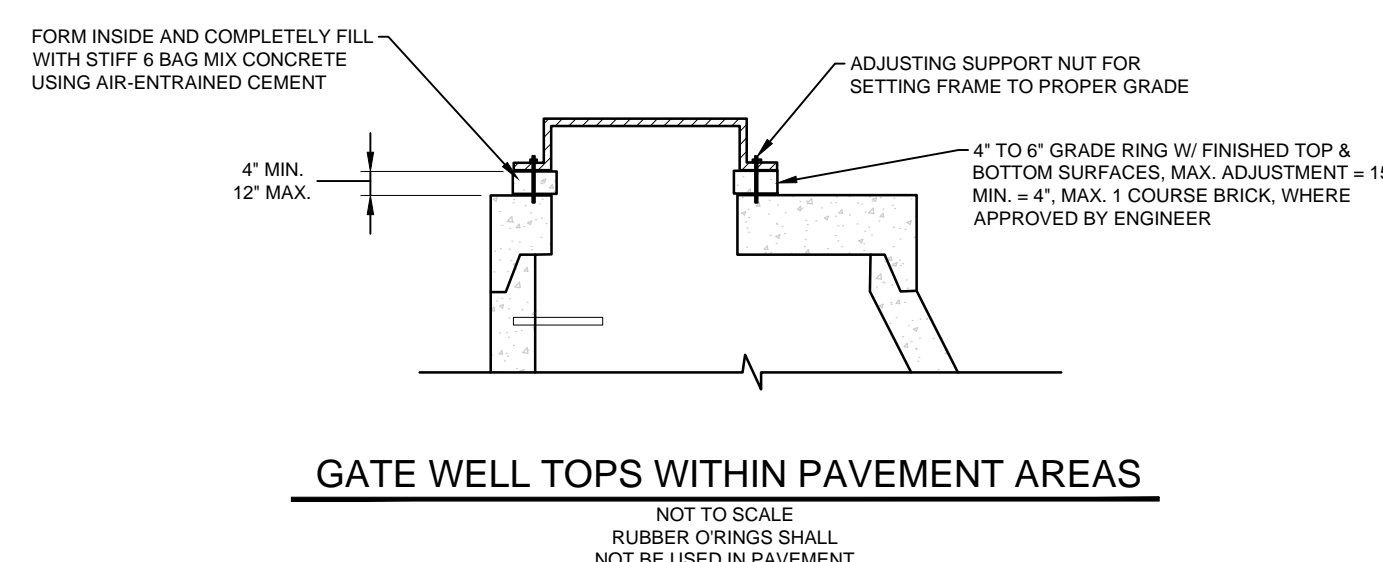
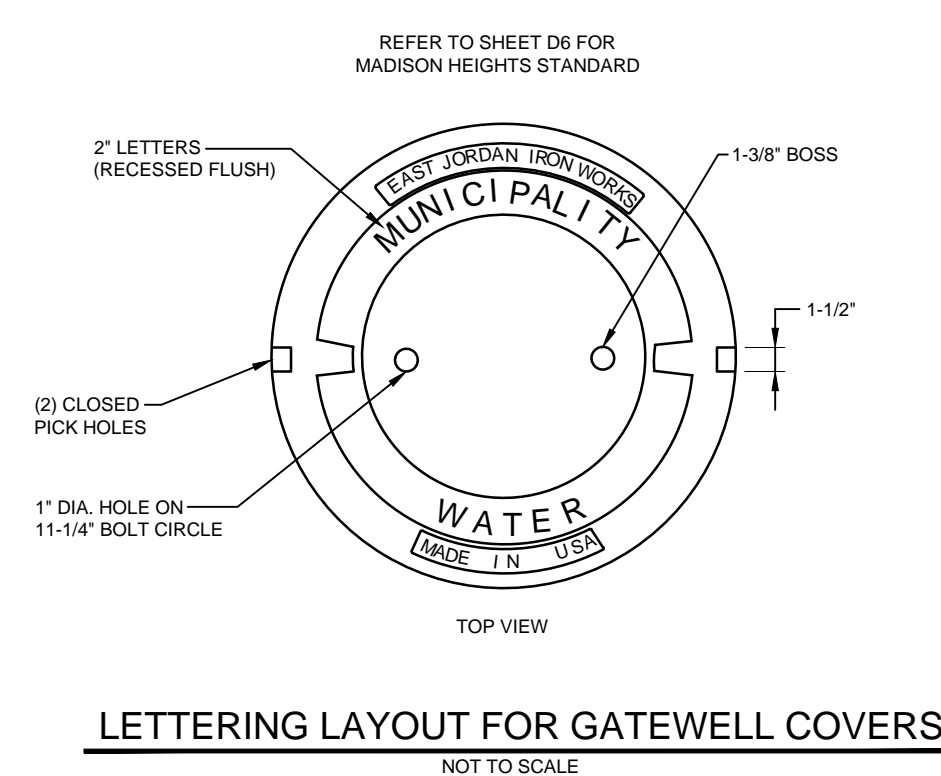
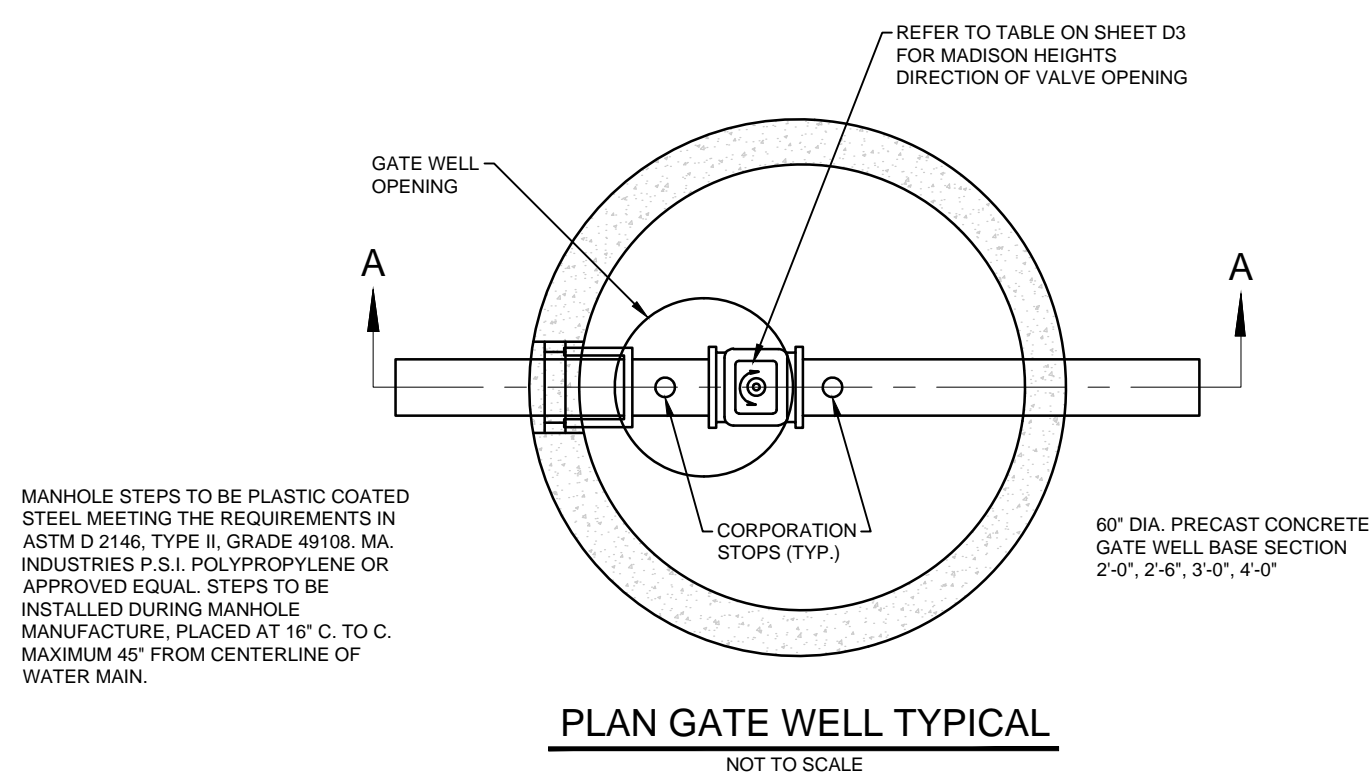
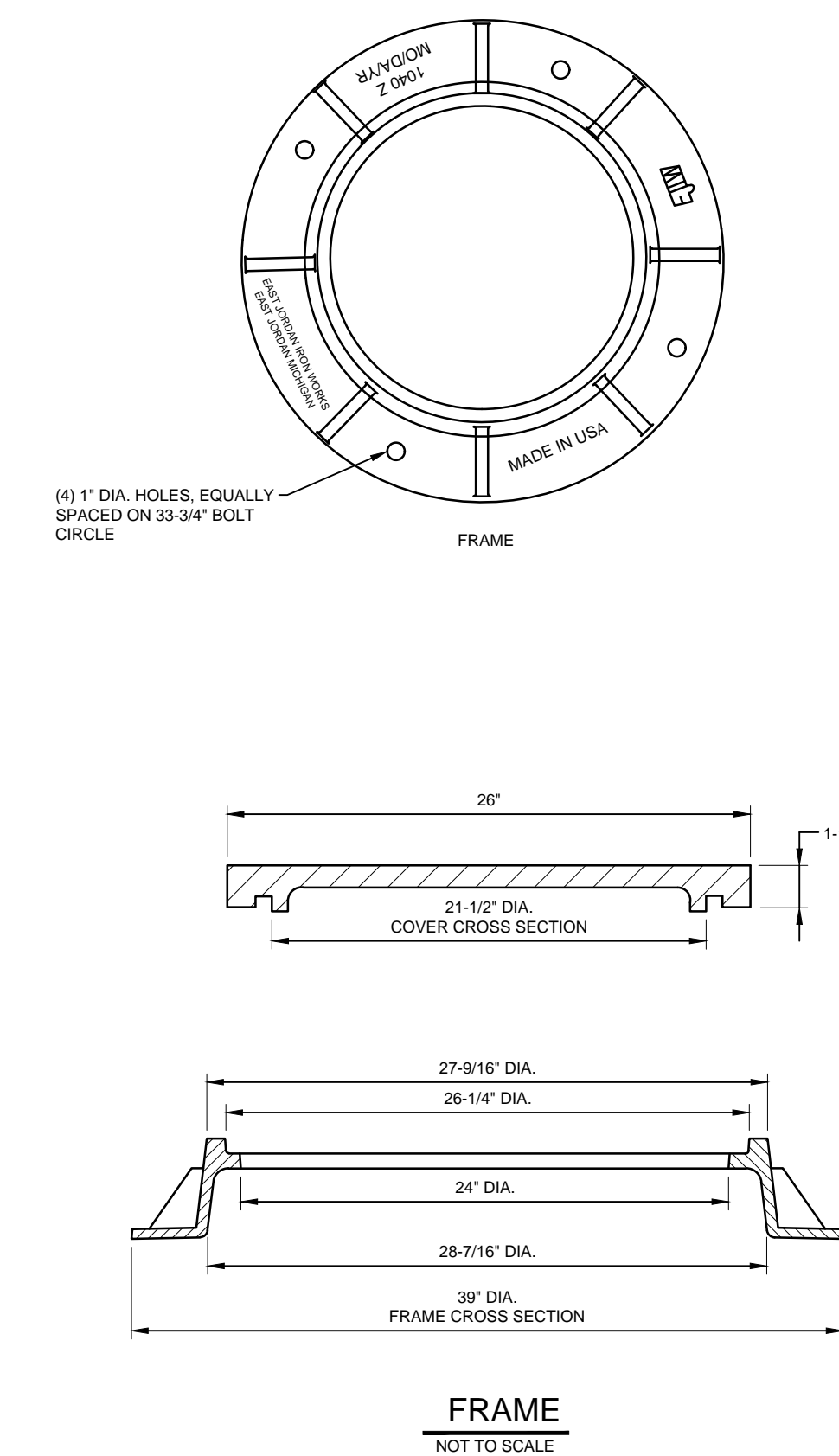
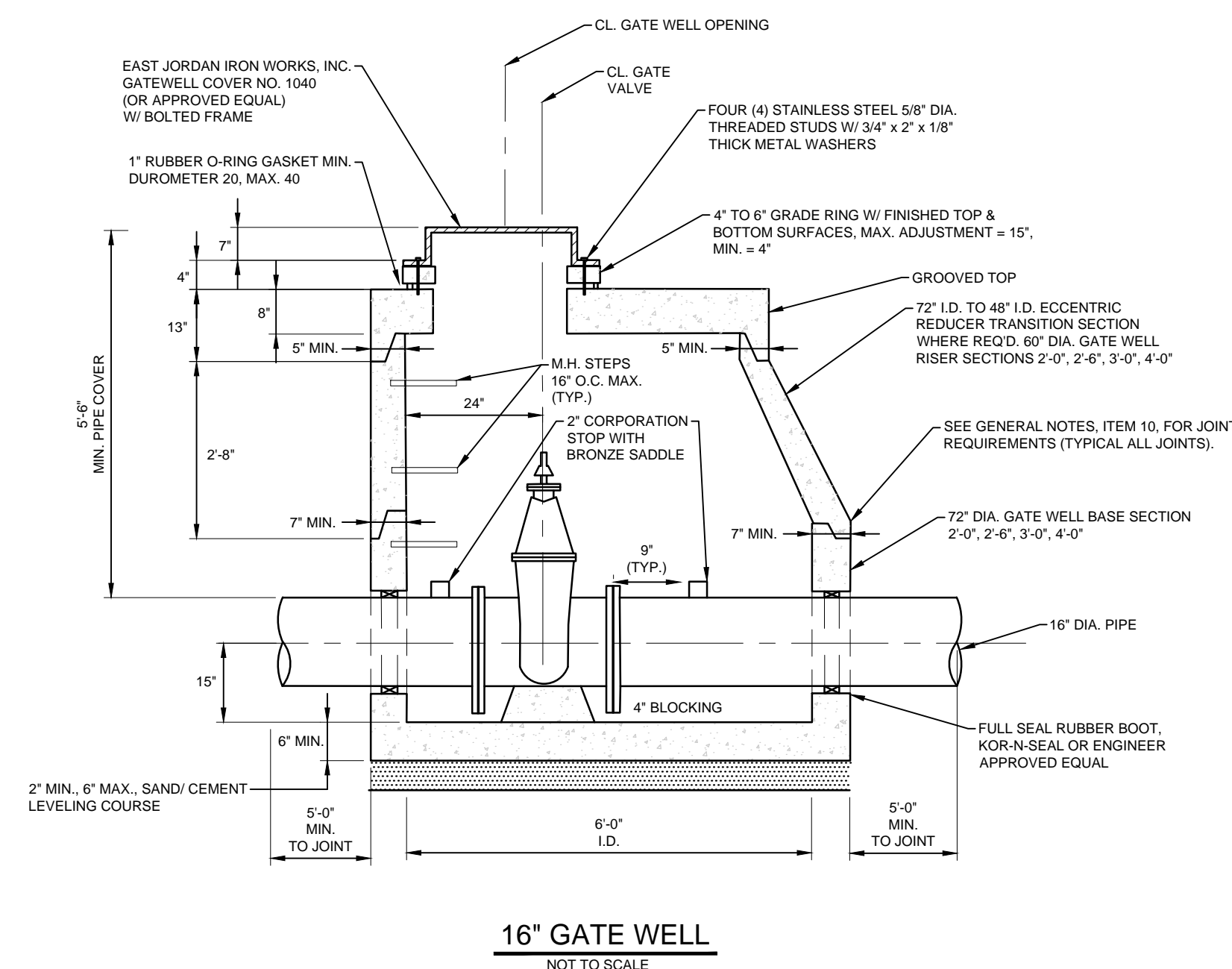
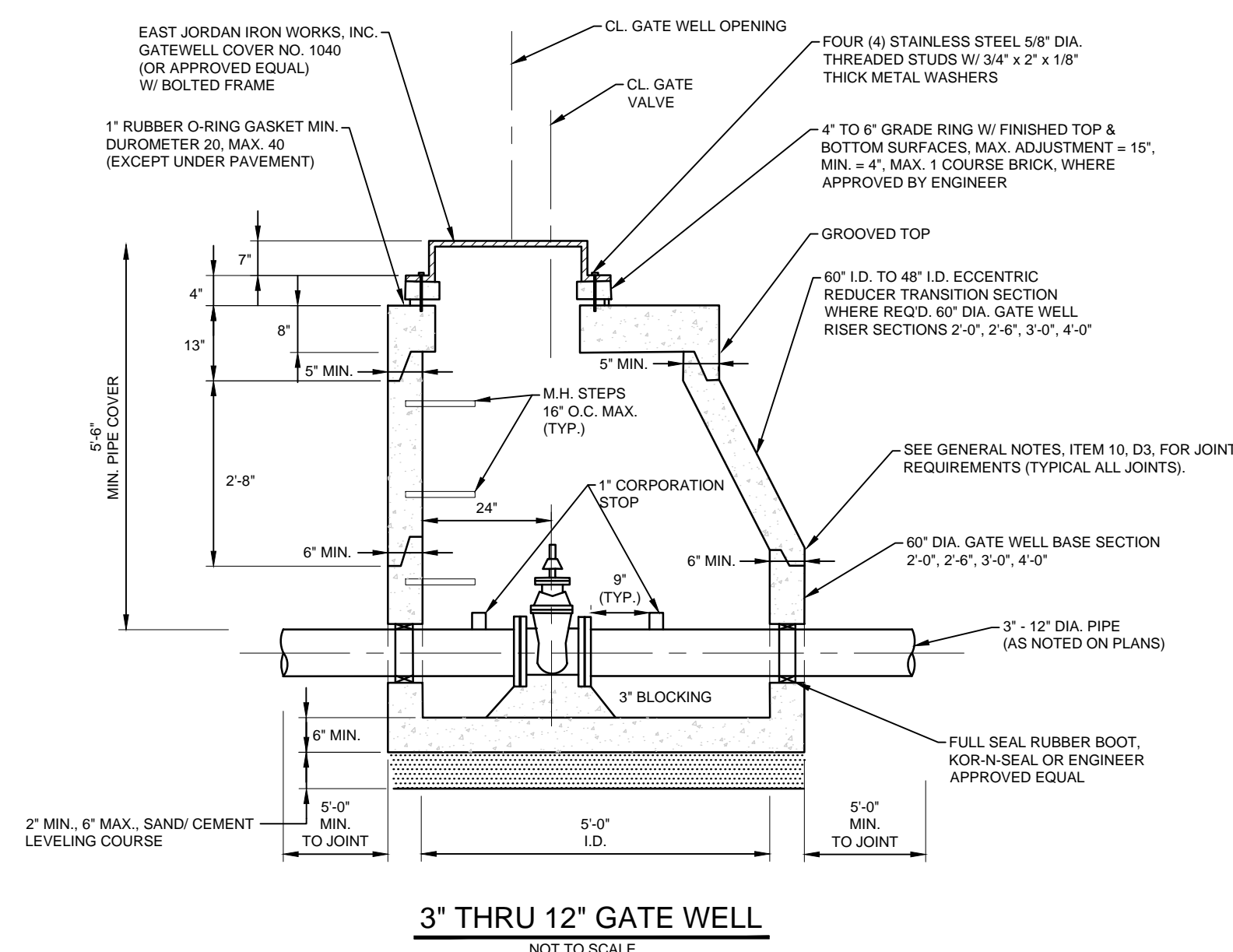
APPROVED BY:
T. Germain

DATE:
December 9, 2019

SCALE: N.T.S.

NFE JOB NO. SHEET NO.
L418 D1

GATE VALVE & WELL DETAILS



- NOTES:
1. REFER TO NOTE 7 OF "VALVE AND SLEEVE NOTES" ON SHEET D3.
2. FOR PIPE SMALLER THAN 16" USE 1" CORPORATION STOP WITH BRONZE SADDLE. FOR 16" PIPE OR LARGER USE 2" CORPORATION STOP WITH BRONZE SADDLE.
3. REFER TO NOTE 11 OF "GENERAL NOTES" ON SHEET D3.
4. CITY OF MADISON HEIGHTS DOES NOT RECOMMEND SIZE ON SIZE TAPPING.

